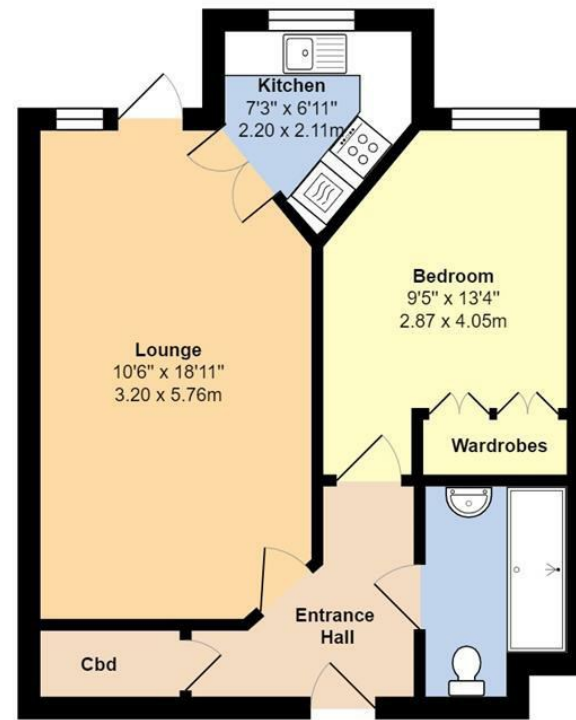


Church Street, Littlehampton BN17 5PY

£145,000 - Leasehold

Glyn-Jones



Ground Floor

Total Area: 484 ft² ... 45.0 m²

Whilst every attempt has been made to ensure the accuracy of the floor plan contained here, measurements are approximate and no responsibility is taken for error, omission or mis-statement. This plan is for illustrative purposes only and should be used as such by any prospective purchaser. Created by Jtm 2022



- Ground Floor Apartment
- Modern Kitchen
- Lounge/Diner with Patio Door
- Double Glazing
- Excellent Decorative Order
- One Double Bedroom
- Modern Shower Room
- Electric Heating
- Communal Gardens
- Residents Parking

Ground Floor Retirement Apartment | One Double Bedroom | Spacious Lounge/Diner | Modern Fitted Kitchen | Modern Shower Room | Refitted Electric Heating | Double Glazing | Personal Patio Door | Communal Gardens | Residents Parking | Popular Block | Excellent Decorative Order | EER - B

TENURE - Leasehold

Council Tax Band: B

Energy Performance Rating: B

AGENTS NOTE - For clarification, we wish to inform prospective purchasers that we have prepared these sales particulars as a general guide. We have not carried out a detailed survey nor tested the services, appliances and specific fittings. Room sizes should not be relied upon for carpets and furnishings.

WITH OVER...



At an Average rating of **4.9/5** ★★★★★



Glyn-Jones & Company
Littlehampton Office Sales
01903 739000
littlehampton@glyn-jones.com



At an Average rating of **4.9/5** ★★★★★



Glyn-Jones & Company
Littlehampton
01903 739000

4 Francis Court, Church Street, Littlehampton, BN17 5PY



WITH OVER...



COMPANY REVIEWS

At an Average rating of



Glyn-Jones & Company
Littlehampton
01903 739000